

THE YOUNGLOVE CONVEYOR

FOR EMPLOYEES AND FRIENDS OF YOUNGLOVE CONSTRUCTION, L.L.C.

► Leaders in the design and construction of bulk materials handling facilities

Builders of value... Builders of trust... Since 1896

Budgeting: The Start of a Successful Project

“The Field Viewpoint” by Loren S. Field, P.E., Senior Vice President

Long before the first spade of dirt was excavated on a construction site, a project budget was developed. As a matter of fact, when a project is considered, the first question asked is, “How much will this cost?” Over the years, this question has become more difficult and more time consuming to answer.

Where does an owner start on developing a project budget? First, the owner should answer some big questions.

- How do we want to operate?
- How much production do we need?
- Where do we want to locate?
- How will the long-term transportation costs affect us?
- What source of financing will be sought?
- What return on investment will justify this project?

Now the secondary, more nuts-and-bolts issues come to the forefront.

- How much land do we need?
- How big of a structure should it be?
- How long will the project take?
- Where do we go to get budget figures for the various line items in our budget spreadsheet?
- What equipment do we need?

All of the above are taken into consideration with the understanding that good project definition will yield a more accurate project budget.

The third step begins the development of numbers. The owner should seek out information from sources that know what products and services cost. These sources will include engineering and design firms, contractors, trade associations, cost guides, and internal sources.

As the project continues toward better definition,



one must remember to keep the numbers accurate, reliable, realistic, and complete. A solid, accurate budget lends credibility to the project—not only with the lender but also internally, as the estimated return on investment will mirror the actual return on investment.

The projects of today have become more complicated; thus, so has the budgeting process. Even though time is always short in budget development, quality of the budget should trump time, as the budget is the first building block of a successful project!

...one must remember to keep the numbers accurate, reliable, realistic, and complete.

Work Progressing on Schedule at Fremont

Plant Expansion; Natura Pet Products; Fremont, Nebraska

Jeff Poss, Vice President and Project Manager; Dar Bierman, Project Superintendent



Slip forms almost ready

additional ingredient storage, new receiving, and additional batching capabilities.

We began the site work and piling last year, placed the pile cap during the winter months, and slipped a new tower the last week of March.

Interior work is proceeding, with a goal to begin using the new receiving equipment this fall.

We built the original plant for Natura Pet Products in 2002-03, and last

year we began engineering work on their expansion plans. New plans include



YOUNGLOVE NEWS

John Gleeson Awarded 2011 Build Iowa Award

John Gleeson,

Chairman of Younglove, was recently bestowed with the 2011 Build Iowa Award at the Master Builders of Iowa Leadership Breakfast.



John is the third generation to receive such an award, as his father (Robert E. Gleeson) and grandfather (William A. Klinger) are also past recipients.

Inspired by the MBI motto, the Build Iowa Award is presented annually to the individual who best exemplifies the tenets of his or her

organization—skill, responsibility, and integrity. The honorees are judged by the way in which they have performed both within the construction industry and within their communities.

John was instrumental in organizing what is now the Master Builders of Sioux City and very active in local labor relations issues and contract negotiations. He is a past member of the Board of Directors of MBI and a leader in the continuing development of the Construction Engineering Program at Iowa State University.

John has also been extremely active in his local community. His

involvement includes a variety of leadership positions, including board chair of 12 organizations, some of which are the Iowa College Foundation; Siouxland Initiative; United Way of Siouxland; Sioux City Chamber of Commerce; St. Luke's Regional Medical Center; Boys Club of Siouxland; Girls, Inc.; and the Cancer Center of Siouxland.

Suffice it to say John Gleeson is always there to assist and volunteer with his leadership, time, talent, and energy—not only to his industry, but to his community as well.

Congratulations, John!

United Grain Selects Younglove for Vancouver Grain Terminal Expansion

**Grain Terminal Improvements; United Grain Corporation; Vancouver, Washington
Ken DuBois, Vice President; Kenny Gubbels, Project Manager; Mike Bangert, Project Superintendent**

We are pleased to announce that United Grain Corporation has awarded Younglove with a contract to design and build their grain terminal expansion project in Vancouver, Washington, within the Port of Vancouver.

The expansion will consist of two large concrete silo storage annexes and one tall concrete cleaning/shipping annex. Each annex will be constructed using the concrete slipform method.

There will be around 5,000 cubic yards of concrete in each annex slip. The cleaning/shipping annex is designed with the cleaning house on top of the shipping bins. This will be a 300-foot-tall structure constructed out of solid concrete during one slip.



Existing structure deep foundation demolition (wood piling removal)

Right after the first of the year, Project Superintendent Mike Bangert and crew began mobilizing to the site and got to work on job-site set-up, existing building demolition, and building the forms for the slipform process. To date, we have completed the mat foundation excavation for all structures and have started placing some of the 1,200 driven grout piles for the deep foundations required for the project.

The current schedule is on track for slipping the cleaning/shipping annex in June 2011 and the other two annexes in late August 2011.

We would like to thank United Grain for entrusting Younglove to design and construct their facility. We look forward to developing a strong working relationship with them for this project and future projects to come.

Younglove Begins Second Project for The Maschhoffs

**Feed Mill Expansion; The Maschhoffs, LLC; Carlyle, Illinois
Mike Gunsch, President; Jared Myers, Project Manager; Dave Johansen, Project Superintendent**



Installation of auger-cast piling

Younglove is excited to be involved with expanding The Maschhoffs' existing feed mill located in Carlyle, Illinois. This will be the second project we have been involved with them on.

This expansion consists of a 33-foot by 51-foot by 140-foot-tall slipform tower that will serve new grinding, pelleting, and loadout operations. New tilt-up concrete ancillary buildings will house the grinding operations, boiler room, and loadout driveway extensions.

The grinding operations shall consist of a new three-high roller-mill by RMS Roller-Grinder to grind whole grains at a rate of 40 tons per hour. Two existing double-high

rollermills will be relocated from the existing feed mill into the new grinding tower to serve as back-up grinding during maintenance of the new three-high

unit. Ground grain will be elevated and conveyed to the existing feed mill for batching and mixing operations. Younglove shall also install a new 40-ton-per-hour pelleting system, which will consist of a Bliss Model B200B-280 pellet mill and Bliss Model 13-339-6 counter-flow cooler.

Pelleted feed will be elevated and run through an APEC fat coating system for post-pellet liquid application. Once liquid fat is applied, pellets will be conveyed and distributed to the bulk loadout bins. Loadout operations will consist of

a 10-ton traversing weigh lorry system.

Younglove has been performing structural engineering and material procurement over the past couple of months. Major material handling and processing equipment has been purchased so deliveries can be scheduled and shop drawings submitted.

Under the leadership of Dave Johansen, Younglove's field crew mobilized to Carlyle in late March. The 54 auger-cast piles have been installed to support the foundation of the new tower; and we have excavated for the pile cap foundation slab, installed the underground electrical conduit for the service entrance, and begun installing reinforcing steel for the pile cap.

Over the next several months, Dave and crew will be preparing for the tower slip and installing intermediate concrete floors and material handling and processing equipment.

We would like to thank The Maschhoffs for the trust they have placed in Younglove by allowing us the opportunity to be involved in this second project for them.

THE MASCHHOFFS
Progressive Farming. Family Style.



Good Progress Made on Peco Foods Feed Mill in Lake, Mississippi

Feed Mill; Peco Foods, Inc.; Lake, Mississippi

Loren Field, Vice President and Project Manager; Dave Wilberg, Project Superintendent

Since we last visited about the Lake, Mississippi, project, a tremendous amount of work has been put in place for this very important poultry feed mill for Peco Foods.

In mid-January, the feed mill structure was slipformed in fine fashion. At the very same time, the adjacent soy silo was slipformed as well. Due to the fact that one was a feed mill, the other was a silo, and both will slip at different rates, we treated these two structures independently.

On the feed mill, we have since wrecked off the forms, poured both bin decks, and placed the roof and work floor. Additionally, we have installed the square-to-round hoppers in the mill and loadout and set the feed cleaner, crumbler, and pellet mill.

The roof of the pelleting tower is partially in place, with work ongoing under the bins with respect to the hoppers, screw feeders, scale hoppers, and control room.

Above the bins, we are working on distributor spouting and bin vents.

On the grain storage side, the main slab was placed on March 25, with an anticipated slip date of May 9 for the grain storage and receiving building.

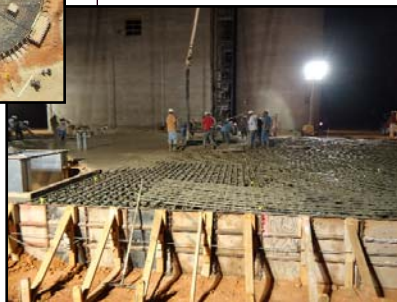


Mill and soy silo



Above: Silo foundation slab ready to pour

Right: Placing the silo foundation slab



As for electrical, we have roughed in a tremendous amount of below-grade conduit,

which has saved this project much money and time with respect to future considerations for pulling wire when motors are set. The electrical rooms have been efficiently placed to reduce the amount of conduit and wire required for each motor load.

We are moving into spring and more favorable conditions for flat work and construction in general, and we look forward to good production through the spring and early summer months. Our Lake, Mississippi, crew is doing an outstanding job both on the schedule and quality.

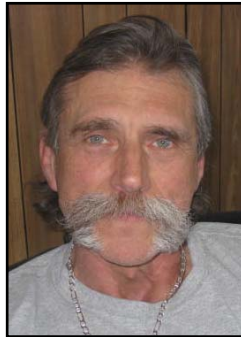
15 Employees Honored for Years of Service with Younglove

A company is as good as its people—and Younglove is certainly no exception. As long as I have worked for this organization, Younglove has been blessed with outstanding individuals working throughout the company as a cohesive team—talented, hard-working, dedicated, and loyal people who love to be part of the process that builds facilities related to feeding others around the U.S. and the world.

Set forth on these pages, we acknowledge a number of Younglove team members for their longevity with us (in 5-year milestones) as of January of this year. We have thanked our dedicated employees every spring since 1976 on the occasion of their 5, 10, and up to 45 years (yes, there have been a couple 45-year veterans in the past) with a small gift as a token of our appreciation. When you see one of the listed individuals, please take time to congratulate them, for they are part of the heart and soul of our success.

Let me be the first to congratulate each and every one of you and to thank you for your loyalty and dedication to Younglove.

— Michael A. Gunsch, P.E.
President



Dar Bierman
Project Superintendent
30 Years



John Severe
Design Technician
30 Years



Allan Beatty
Truck Driver
25 Years



Bruce Bangert
Lead Foreman
20 Years



Mona Bangert
Laborer
15 Years



Kenny Fuller
Foreman
15 Years



Jarret Bierman
Lead Foreman
10 Years



Joseph Conde
Millwright
5 Years



Thomas Cravens
Millwright
5 Years



Fred Frahm
Foreman
25 Years



David Milian
Foreman
25 Years



Tom McCracken
Lead Foreman
15 Years



Terry Reinert
Project Superintendent
15 Years



Jose Solorzano
Foreman
5 Years



Oscar Zamora
Millwright
5 Years

Younglove is pleased to announce that **Marisa Rose**, an undergraduate at Kansas State University majoring in the Feed Science and Management program, is the recipient of the 2010-11 Younglove Construction Feed Science Scholarship.



Marisa grew up on a farm near Great Bend, Kansas, where she was actively involved in 4-H and FFA. She is currently an active member of the KSU Feed Science Club and Collegiate Cattlewomen and recently attended the International Feed Expo in Atlanta, Georgia.

YOUNGLOVE OPERATING VALUES

In our last issue of the *Conveyor*, we began elaborating on Younglove's five "Operating Values". These values are the foundation upon which Younglove's past, present, and future success is built; and it is our expectation that each and every Younglove employee will follow these principles. Last time we focused on

***Ethical Behavior* and *Excellence*.**

We now conclude with the remaining three values.

Valuing People

- Generate mutual trust and respect.
- Respond to customers, suppliers, subcontractors, and team members in a win-win spirit of cooperation and teamwork.
- Provide the leadership and support required to empower our team members.
- Work safely at all times.
- Recognize the need to balance the demands of work with the considerations of family, home, and outside interests.

Learning

- Maintain an ongoing learning environment.
- Provide training and resources so our team members have the opportunity to reach their highest potential.
- Apply knowledge in creative ways to provide quality service to our customers.

Success

- Build a foundation for continuous achievement.
- Provide team members with a fair and reasonable return on their contribution to the company.
- Enhance the company's financial success.
- Be a valued corporate citizen with active involvement for the betterment of the community.

Knowing (or Not Knowing) Stroke Symptoms Could Change Your Life

By David A. Toel, Project Manager

It can happen in a moment, but it can change your life forever. You can be planning for retirement and looking forward to those golden years. You're relatively healthy, and you think you've got the world by the tail. But then it hits.

Nearly 800,000 Americans have a stroke every year, which occurs when the blood supply to part of your brain is interrupted or severely reduced. Within minutes, the brain cells begin to die.

What are some risk factors that can cause a stroke?

- Personal or family history of a stroke, heart attack, or TIA (mini stroke).
- Being age 55 or older.
- High blood pressure.
- High cholesterol.
- Cigarette smoking or exposure to secondhand smoke.
- Diabetes.
- Being overweight.
- Physical inactivity.
- Cardiovascular disease, including heart failure, a heart defect, heart infection, or abnormal heart rhythm.
- Use of birth control pills or hormone therapies that include estrogen.
- Heavy or binge drinking.
- Use of illicit drugs such as cocaine and methamphetamines.

Getting emergency treatment when you think you or someone around you may be having a stroke



is crucial. Strokes can sometimes cause temporary or permanent disabilities, depending upon how long the brain suffered a lack of blood flow. Among others, these disabilities can include paralysis or loss of muscle movement, difficulty talking or swallowing, memory loss or trouble with understanding, pain, or changes in behavior and self-care. In other words, it can turn your whole world upside down.

So how do you know if you or someone around you is having a stroke? The following are a few symptoms you should look for:

Trouble walking. You may stumble or experience sudden dizziness, loss of balance, or loss of coordination.

Trouble speaking and understanding. You experience confusion, slur your words, or may be unable to find the right words.

Paralysis or numbness on one side of your body or face. You may develop sudden numbness, weakness, or

paralysis. One side of your mouth may droop when you try to smile.

Trouble seeing in one or both eyes. This could include blurred or blackened vision or seeing double.

Headache. A sudden, severe headache which may be accompanied by vomiting, dizziness, or an altered consciousness.

To help us in remembering the above, doctors have instructed us to use the "STR" method:

S Smile. Is your smile normal or crooked?

T Talk. Can you speak a simple sentence coherently (i.e., "It is sunny out today.")

R Raise both arms over your head. Does one arm begin to fall?

Doctors now are telling us there is another sign to look for: Stick out your tongue. If it is "crooked" and goes to one side or the other, it may be an indication of a stroke.

If you recognize any one of these symptoms, call 911 immediately and describe the symptom(s) to the dispatcher. The sooner a stroke victim gets to the emergency facility, the better his or her chances are of making a full recovery.

After all, we all want to keep on track to enjoy all those great plans we're looking forward to!

Younglove Winding Down on Sand Storage Facility in Refugio, Texas

Sand Storage Facility; EOG Resources, Inc.; Refugio, Texas

Loren Field, Sr. Vice President; Dave Toel, Project Manager; Terry Dunnette, Project Superintendent

A lot has been happened since the last issue of the *Conveyor*, as we've completed the 10 slipform silos and wrecked out the forms.

As of late, the major construction process that Terry and his crew have been busy with has been the elevated overhead concrete slabs. Each silo had to have a shoring system installed, form work constructed, and slab rebar installed at each elevated slab. We pumped 70 cubic yards of concrete into place.

Once the elevated slabs are in place, we will begin installing a steel collection hopper to the bottom of each silo slab. The final construction phase will be to place the concrete roof over the silos. This should complete our scope of this project.

We would like to thank Strobel Starostka Construction (the general contractor) for their trust in Younglove for their construction needs.



Finished elevated overhead slab



YOUNGLOVE NEWS

Helen Jane Gleeson passed

away on December 25, 2010, after a wonderfully full life of 93 years.

She was the daughter of William A. Klinger, the man who started the Klinger organization in 1919; the wife of Bob Gleeson, who was the Chairman of Younglove until his death in 2004; and the mother of John Gleeson, Younglove's current Chairman. (For those of you



unfamiliar with our corporate structure, Younglove is one of the four Klinger companies).

People both within and outside of the Klinger companies frequently speak of the outstanding values-based culture we have, and there is no doubt that Helen Jane had a large impact on the culture of our companies. She committed her life to community service, which she gave fully to the very end.

Helen Jane was an extraordinary woman, and she will be missed by all of us.



We are pleased to introduce **Matthew Haden**, who began working with Younglove as a Project Manager on December 1.

Matt hails from Lytton, Iowa; graduated from Iowa State University with an Agricultural Engineering Degree in May of 2006; and has spent the past four and a half years working for an engineering consulting firm in Ankeny, Iowa.

Matt's wife, Jennifer, is doing her residency training at the Family Medicine Center in Sioux City to become a family practice physician.

Welcome aboard, Matt!



Tom McCracken and **Lisa Dawson** were married on January 20, 2011. It seems that, while at the World of Concrete show in Las Vegas, Tom proposed to Lisa after he had "snuck around" to find out all the information they needed to be married there!

Tom and Lisa are both currently working on our Refugio, Texas, job site. Tom is a Lead Foreman with Younglove, having been with the

company for 15 years now. Lisa just recently joined our ranks.
Congratulations, Tom and Lisa!



Andrew Johansen and **Andrea Webb** were married on 1-1-11! They decided to elope to Las Vegas, Nevada, for a small, private wedding. Rumor has it they chose January 1, 2011, so Andy would be able to remember the date!

Andy, a Foreman with Younglove, has been with the company for four years; and Andrea has served as a Job-site Administrator for the past eight months. Both are currently working at the Carlyle, Illinois, job site.

Congratulations, Andy and Andrea!

Former employee **Babette Lahrs** ended her fight with cancer on January 4. She fought hard and struggled much since she began this battle in the fall of 2008.



Having been with the company beginning in June of 1975, Babette performed a wide variety of functions within the Accounting Department, often filling in for others when they were out of the office.

We will truly miss the joyful spirit and ready smile Babette always had for each of us.

Long-time employee **Ron Wolf** retired April 1 after 40-plus years with the company. Ron was in charge of all of our billings and did an outstanding job for us. His immediate plans include a bit of sailing in Key West!



Congratulations, Ron, and we wish you and Pat all the best in your retirement years!



Bruce and Peggy Hamel recently celebrated their 25th wedding anniversary on March 23. In honor of the event, they bought themselves a new touring motorcycle—but they actually bought it four years ago so they'd have plenty of time to enjoy it!

Peggy has been the Administrative Assistant in Younglove's home office for the past 24 years.

Congratulations, Bruce and Peggy!

Do you have some employee news you'd like included in our next issue? If so, please mail it to Peggy Hamel, P.O. Box 8800, Sioux City, Iowa 51102, or e-mail her at: phamel@younglovelc.com

Work Begins on Grain Storage Annex for New Client in Superior, Nebraska

Grain Storage Annex; Agrex, Inc.; Superior, Nebraska

Mike Gunsch, President; Dave Toel, Project Manager; Dave Brodersen, Project Superintendent

Younglove was awarded a new grain storage annex for a new client, Agrex, Inc., in Superior, Nebraska.

The project will consist of three 65-foot-diameter by 130-foot-high silos, which will add 1,068,000 bushels of storage for corn, wheat, and beans. Additional features include a truck bulk load-out scale system and the ability to scalp incoming grains. Transfer and reclaim belt and drag conveyors are rated at 30,000 bushels per hour. Each silo will have a 1/10



Installation of auger-cast piling

will continue building forms and placing rebar for the mat slab.

Our projected date for slipforming the silos is the first week in June.

Dave Brodersen and crew are busy staking out the locations for the placement of 514

auger-cast piles. Once this process is complete, they



YOUNGLOVE

Builders of value...

Builders of trust

The Younglove Conveyor is published twice a year by

Younglove Construction
2015 East Seventh Street (51101)
P.O. Box 8800 (51102)

Sioux City, Iowa
712-277-3906 • Fax 712-277-5300
younglove@younglovelc.com
CA Lic. No. 420491

For more information, please request a corporate brochure at the above address.

The Younglove Conveyor, Vol. 11, Issue 1

Younglove...Since 1896

YOUNGLOVE MISSION STATEMENT

Our mission is to provide premier construction services, including design, construction, and project management. We build enduring value and trust using a dedicated team approach to continuously improve customer satisfaction, safety, quality, and our work environment.



YOUNGLOVE

Builders of value...Builders of trust

Younglove Construction

P.O. Box 8800

Sioux City, IA 51102

Address Service Requested

PRSRT STD

U.S. Postage

PAID

Sioux City, Iowa

Permit No. 138

PROJECT UPDATE

Another One in the Record Books

Facility Upgrades; ConAgra Foods, Inc.; Chester, Illinois

Jeff Poss, Vice President and Project Manager; Dave Johansen, Project Superintendent

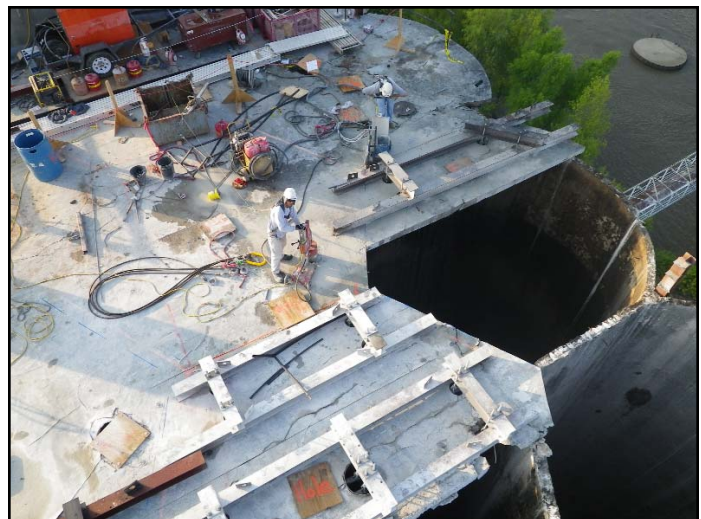
With a 200-foot boom and a 100-foot luffing jib, everything on the top of the silos (including a gently aged concrete roof) was removed.

Fortunately, a new roof was poured before winter; but the crew still had to work the cold months on top. Now that better weather prevails, the crew has moved on to the next endeavor.

With a new roof, new equipment up top, and new bucket elevators, this grain storage unit is

ready for the next 50 years (original construction was in 1964).

We appreciate the continued confidence ConAgra has shown in us and extend our thanks for their making us a part of their team.



Roof removal